

## **List of Figures**

**Figure 1: Daguerreotype of Wyncote Mansion and Estate**

**Figure 2: Lesley-Travers Mansion**

**Figure 3: Gothic Revival Comparisons with the original 1850's section of Rockwood**

**Figure 4: Colored-coded Phases of Construction at Rockwood Estate**

**Figure 5: Rockwood Estate's 1<sup>st</sup> Floor Plan for Phase 1 of Construction**

**Figure 6: 1<sup>st</sup> Floor Plan with additions at Rockwood Estate**

**Figure 7 : Photographs of Surviving Trees Planted by Joseph Shipley during the 19<sup>th</sup> Century**

**Figure 8: Map Excerpt – Brandywine Hundred, New Castle County, Delaware Rea & Price map of New Castle County, Delaware (1849)**

**Figure 9: Map Excerpt: Brandywine Hundred, New Castle County Delaware Pomeroy and Beers Atlas of the State of Delaware (1868)**

**Figure 10: Map Excerpt: Rockwood Property – Brandywine Hundred, New Castle County, Delaware Hopkins Map of New Castle County, Delaware (1881)**

**Figure 1: Daguerreotype of Wyncote Mansion and Estate**

**Source: Special Collections, University of Delaware Library: Shipley-Bringhurst-Hargraves Family Papers**

**ID #e8515\_1\_open**

[https://library.artstor.org/#/public/SS36142\\_36142\\_32618713](https://library.artstor.org/#/public/SS36142_36142_32618713)



**Figure 2: Lesley-Travers Mansion**

Source: <https://www.loc.gov/pictures/item/de0101.color.570778c/>



**Figure 3: Gothic Revival Comparisons with the original 1850's section of Rockwood**



Ohio House - Philadelphia (Library of Congress Digital Archives)  
<https://www.loc.gov/pictures/item/pa0945.photos.137702p/resource/>

Gothic Revival Comparisons with the original 1850's section of Rockwood built for Joseph Shipley, Jr. Wilmington, Delaware



Rockwood – original section (1850s)



Green-Meldrim House – Savannah, GA  
Photo credit By Ebyabe – Own Work, CC BY-SA  
<https://commons.wikimedia.org/w/index.php?curid=16196946>



Lyndhurst Mansion  
<https://lyndhurst.org/>



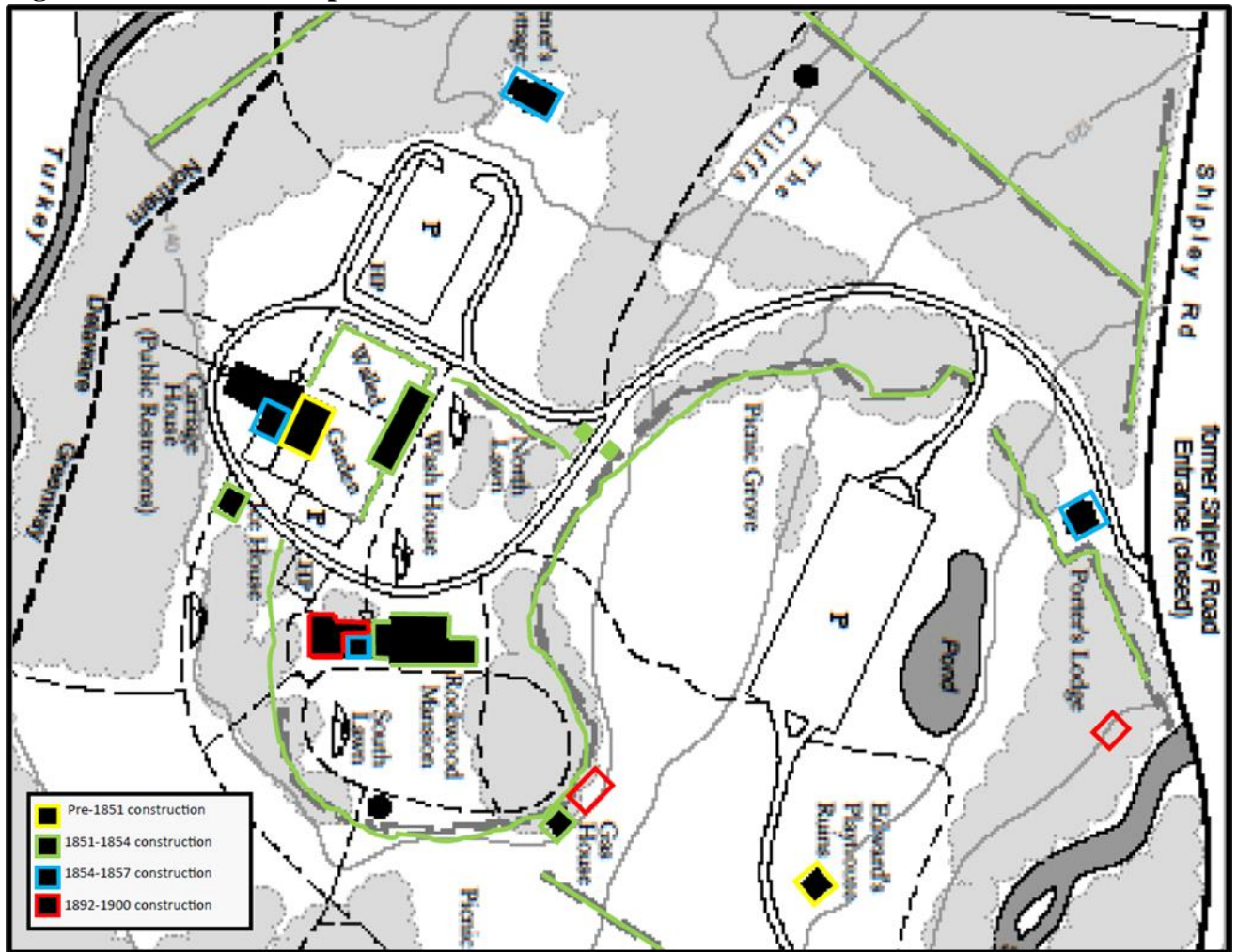
Inglewood Cottage - Philadelphia

<https://www.pinterest.com/pin/inglewood-cottage-is-a-gothic-revival-villa-built-c-1850-located-in-the-chestnut-hill-section-of-philadelphia-pennsy--556616835171509300/>

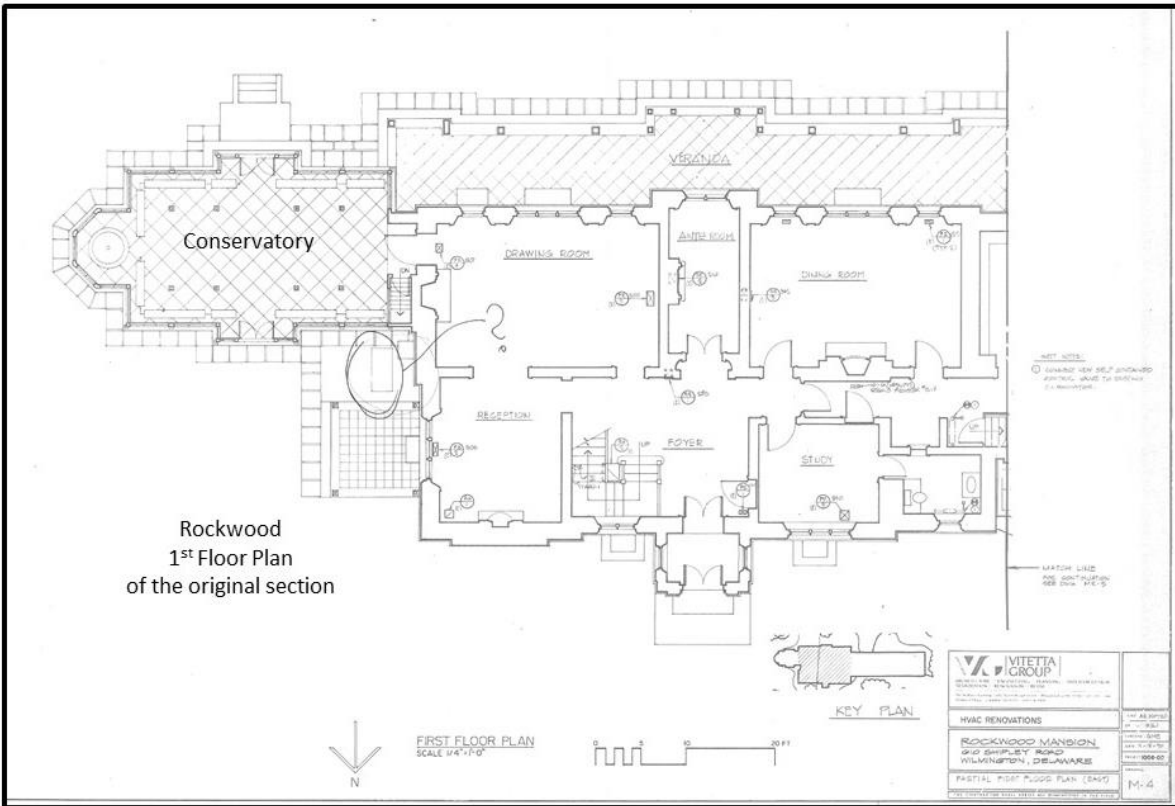
Ebenazar Maxwell Mansion  
Photo credit Carol M. Highsmith



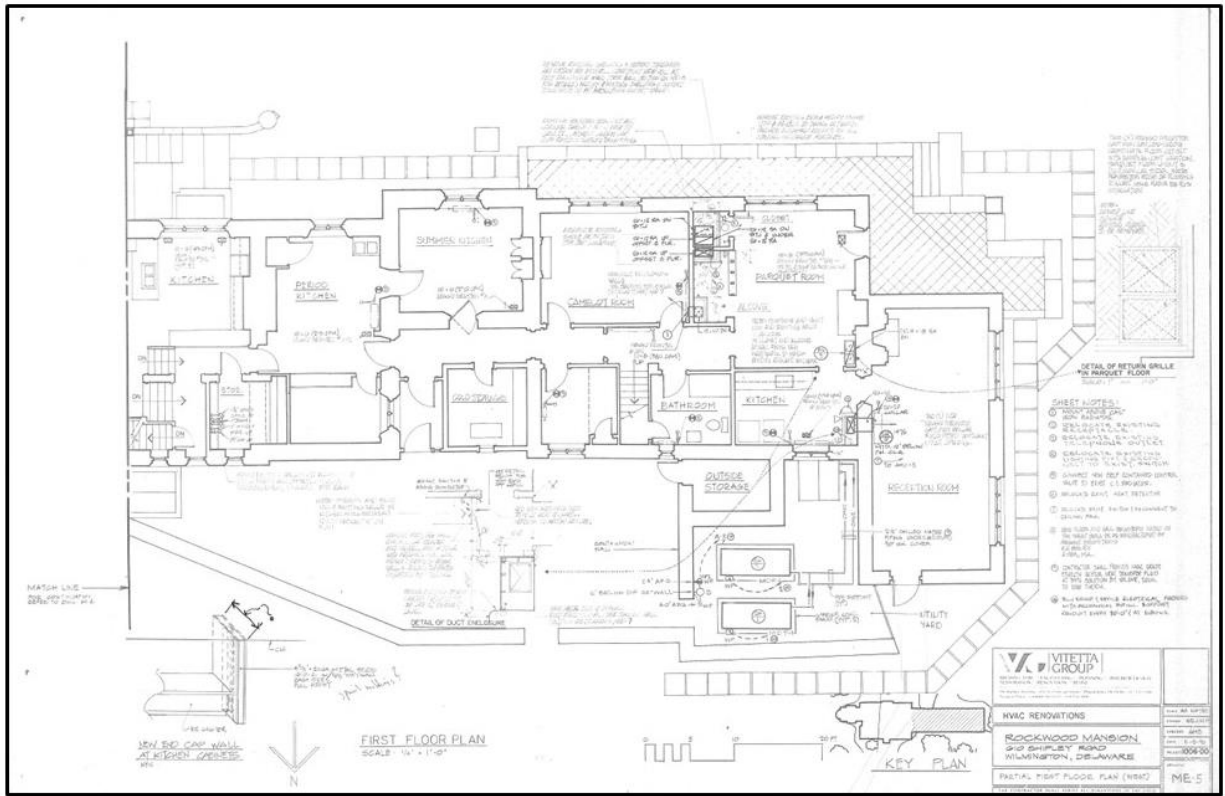
Figure 4: Colored-coded phases of Construction at Rockwood Estate



**Figure 5: Rockwood Estate's 1st Floor Plan for Phase 1 of Construction**



**Figure 6: 1st Floor Plan with additions at Rockwood Estate**



Rockwood – 1<sup>st</sup> floor plan of the late 19<sup>th</sup> and early 20<sup>th</sup> century appendages

**Figure 7 : Photographs of Surviving Trees Planted by Joseph Shipley during the 19th Century**

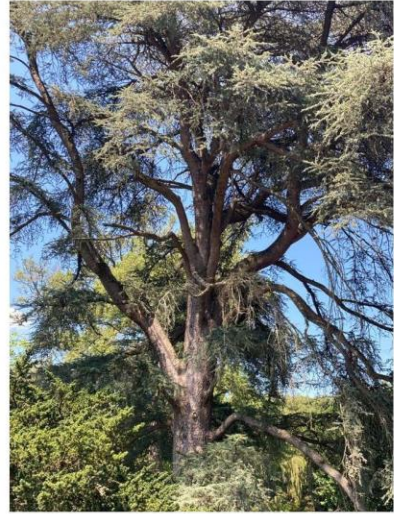
Examples of Surviving Trees Planted by Joseph Shipley at His Rockwood Estate During the 1850s and 1860's



Black Gum Tree



European Larch



Blue Atlas Cedar



Figure 8: Map Excerpt – Brandywine Hundred, New Castle County, Delaware Rea & Price map of New Castle County, Delaware (1849)

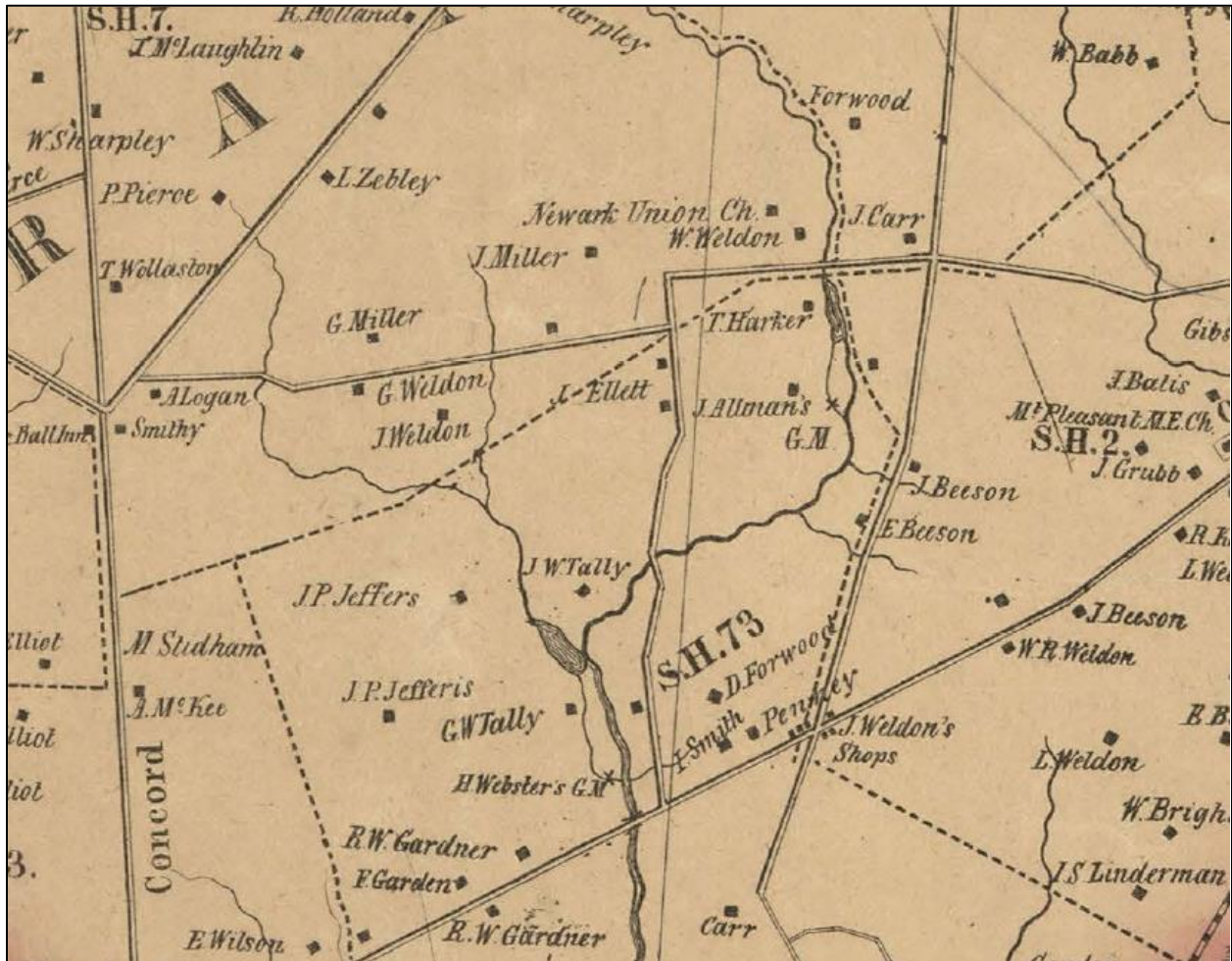


Figure 9: Map Excerpt: Brandywine Hundred, New Castle County Delaware Pomeroy and Beers Atlas of the State of Delaware (1868)

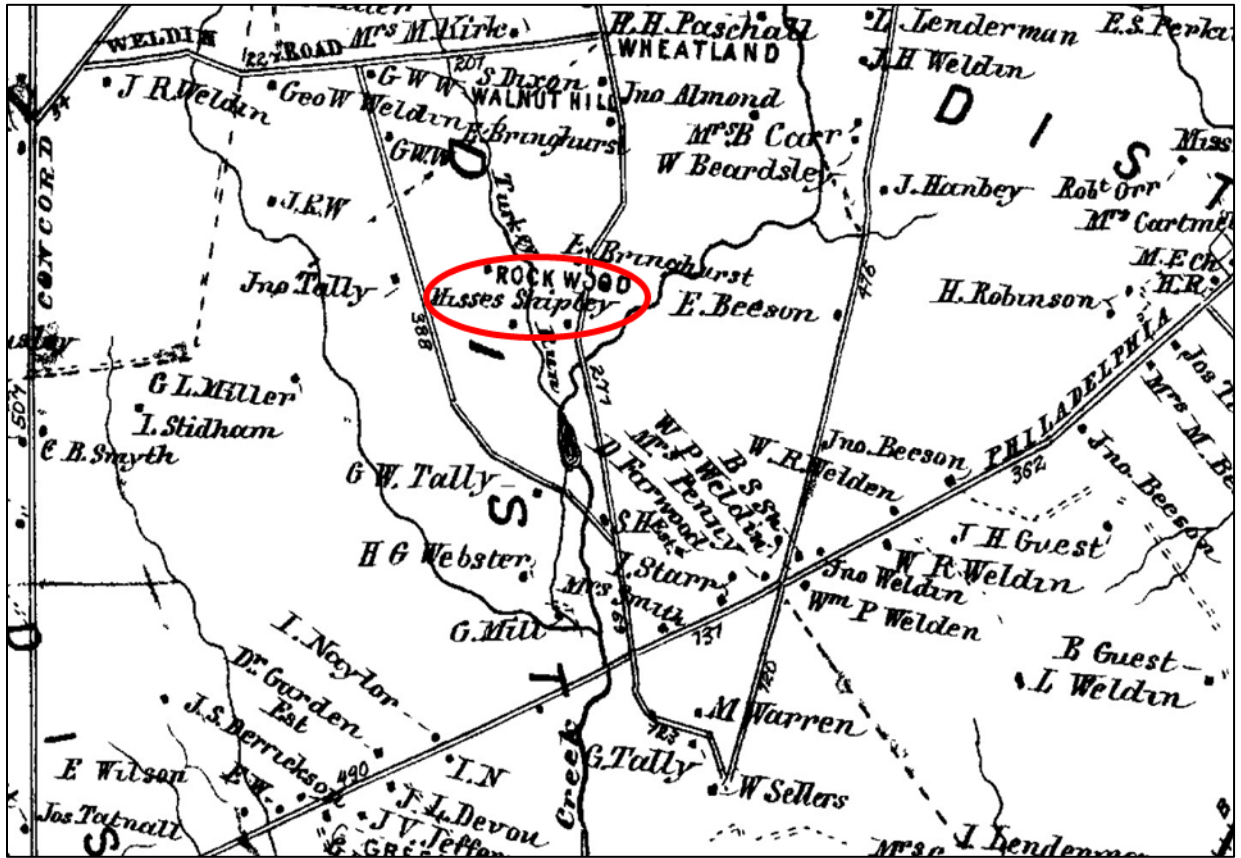


Figure 10: Map Excerpt: Rockwood Property – Brandywine Hundred, New Castle County, Delaware Hopkins Map of New Castle County, Delaware (1881)

