

Historical and Cultural Affairs

The historic preservation and museums newsletter of the Delaware Division of Historical and Cultural Affairs.

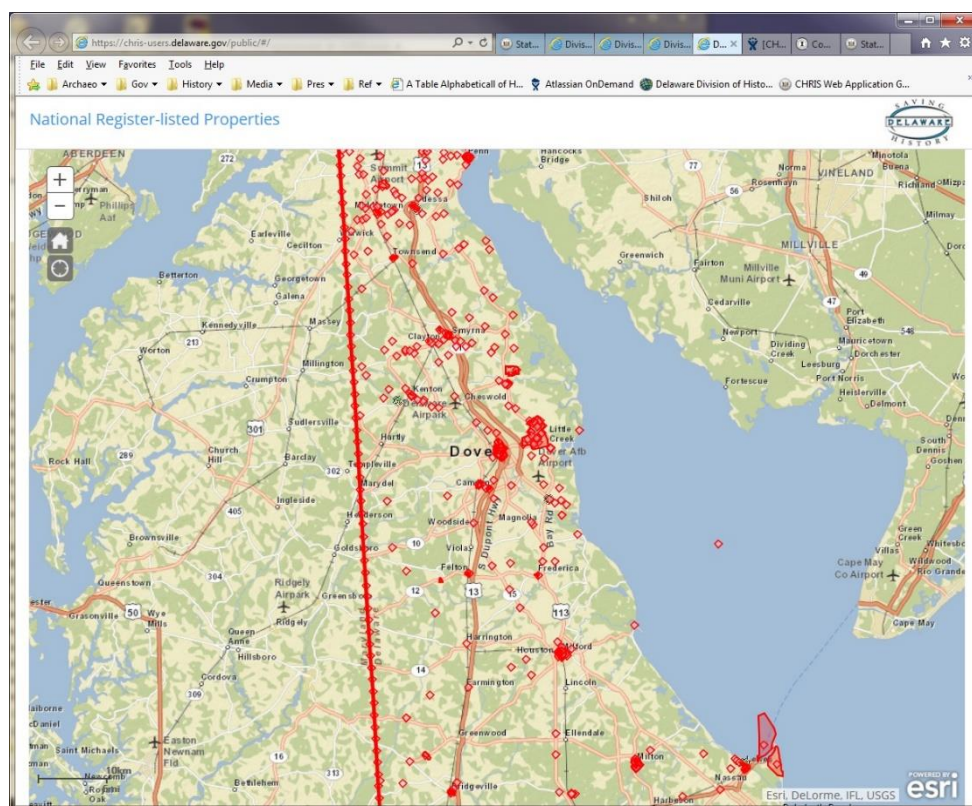
Feb. 27, 2015 * Volume 8, Issue 2

News

Division unveils updated geographic information system for Delaware's historic properties

Web-based system is now available for public use.

[Read more ...](#)



National Register locations in Delaware from the updated version of CHRIS.

Delaware Division of Historical and Cultural Affairs seeks horticultural manager

Position will be responsible for the care of several state-owned natural resources.

Deadline: March 4, 2015.

[Read more ...](#)

National Women's History Month events among 13 special programs sponsored by the division during March 2015

Programs on Dr. Ruth Mitchell Laws and Louise du Pont Crowninshield among the month's highlights.

[Read more ...](#)

[Go here for more news items ...](#)

Help Save Delaware History

Delaware State Historic Preservation Office recent accomplishments

Office's programs help to preserve Delaware's historic places and unique cultural identity.

[Read more ...](#)

National Historic Preservation Advocacy Week in Washington, D.C., March 2 to 4, 2015

Annual gathering promotes sound federal preservation policy and programs.

[Read more ...](#)

Call for papers: "The Early Colonial Delaware Valley—An Archaeological and Historical Symposium"

Deadline for submission of abstracts: April 24, 2015.

[Read more ...](#)

2015 Annual Conference to the Harbor Defenses of the Delaware River

Conference sponsored by the Coast Defense Study Group to take place from April 29 to May 3, 2015 in Middletown and then Rehoboth Beach, Del.

[Read more ...](#)

"Preserving Our Past for a Better Future: Delaware's Historic Preservation Plan, 2013–2017"

Document provides a roadmap for focusing on the broad goals and needs of Delaware's preservation community.

[Read more ...](#)

Media Roundup

The following Delaware history-related articles have recently appeared in the media:

[Slavery: Not as Black and White as History Reports](#)

Christian Broadcasting Network, Virginia Beach, Va.—Feb. 24, 2015

Article and video on the Underground Railroad in Delaware.

[Delaware History: 7 Events That Shaped the State](#)

Newsmax, West Palm Beach, Fla.—Feb. 23, 2015

Article on significant points in First State history.

[First State Heritage Park's First Saturday Commemorates Women's History Month](#)

WBOC TV, Salisbury, Md.—Feb. 23, 2015

Several programs to take place on March 7, 2015.

[No snow delay of Dickinson tribute](#)

News Journal, Wilmington, Del.—Feb. 23, 2015

Article on ceremony marking the 207th anniversary of the death of John Dickinson.

[Dover, Delaware: Kid-friendly getaway](#)

Metro, New York, N.Y.—Feb. 19, 2015

Article on activities in the First State's capital city.

[Lighthouses tell Delaware's maritime history](#)

Daily Times, Salisbury, Md.—Feb. 19, 2015

Article on the First State's historic beacons.

[Revolutionary change](#)

UDaily, University of Delaware, Newark, Del.—Jan. 30, 2015

Article on the removal of historic dam from White Clay Creek.

Events

Saturday, March 7

The Women Who Influenced Victor – Johnson Victrola Museum
The Battle of Iwo Jima – Delaware Public Archives
War of the Roses: The Suffragist Movement in Delaware – The Old State House
The Minstrel Boy – Schwartz Center for the Arts

Saturdays, March 7, 21 and 28

A Woman's World – John Dickinson Plantation

Wednesday, March 11

Louise du Pont Crowninshield—Historic Preservation Pioneer – New Castle Court House Museum

Saturday, March 14

Pi(e) Day at the Plantation – John Dickinson Plantation
Demonstrations by the Thistledown Fiber Arts Guild – John Dickinson Plantation
ILC Dover, space travel and space suits – Zwaanendael Museum

Thursday, March 19

Concert by Celtic Harvest – The Old State House

Saturday, March 21

Running of the Mill – Abbott's Mill Nature Center

Wednesday, March 25

History Goes Hollywood: "The Women" – New Castle Court House Museum

Thursday, March 26

A Mothers Legacy and a Daughter's Contributions to Community – The Old State House

Saturday, March 28

The Revolution's Last Men: The Soldiers Behind the Photographs – Hale-Byrnes House

Sunday March 29

Eggciting Easter Event – Belmont Hall

Exhibits and Displays

Opening March 4, 2015

World War II Through the Lens of William D. Willis – Legislative Hall

Thru April 14, 2015

Simple Pleasures: Play and Dance – Zwaanendael Museum

Thru April 19, 2015

Simple Pleasures: Play and Dance – The Old State House

Ongoing

[Delaware and the War of 1812](#) – Zwaanendael Museum

[Emeline Hawkins: Her Journey from Slavery to Freedom on the Underground Railroad](#) – New Castle Court House Museum

Items From the Permanent Collections – Laurel Heritage Museum

[Middletown Goes To War](#) – Middletown Historical Society

[Sculpture by Charles Parks](#) – New Castle Court House Museum

[A Seaborne Citizenry: The DeBraak and Its Atlantic World](#) – Zwaanendael Museum

[Simple Machines](#) – John Dickinson Plantation



Historical and Cultural Affairs

The historic-preservation and museums newsletter of the Delaware Division of Historical and Cultural Affairs.

Historical and Cultural Affairs is designed to stimulate public interest in the division's museums, programs and services, and to increase awareness of the value that history and historic preservation bring to the lives of Delaware's citizens and visitors. The newsletter is distributed during the last week of each month, via e-mail, to division staff members, Delaware's historical- and preservation-related communities and friends. Please submit relevant articles, news items and suggestions to Jim Yurasek, newsletter editor, at jim.yurasek@delaware.gov.

[Non-Discrimination Statement and Acknowledgement of Support](#)

If you would like to be added to, or removed from, the e-newsletter mailing list, please e-mail the editor.

Delaware Division of Historical and Cultural Affairs

21 The Green

Dover, DE 19901

Telephone: 302-736-7400

Fax: (302) 739-5660

Web: <http://history.delaware.gov>