



CHRIS is a GIS web based mapping application developed to assist the Division of Historical and Cultural Affairs in managing the preservation efforts of historic properties and preservation planning.

To begin using CHRIS, public users select the link in the center of the home page at <http://chris.delaware.gov> . HCA staff and their consultants with an active account will log on with the username and password assigned by the CHRIS administrator.

Successful logon takes you to the startup page with the **National Register property** tool, located in the middle of the page. This tool allows the user to search for properties listed on the National Register either by using a parcel ID or Property Name. The tool returns the property information from our database, and the property can be mapped by clicking on the CRS number in the results window.

Do you know if your property is listed on the National Register?

Enter your information below to see if your property is listed on the National Register.

<p>Search by Parcel Id:</p> <input type="text"/> <input type="button" value="Go"/>	<p>Search by Property Name:</p> <input type="text"/> <input type="button" value="Go"/> <input checked="" type="radio"/> Starts <input type="radio"/> Contains
--	--

When the **Mapping** button is selected, CHRIS opens with the DHCA datasets listed, and the State map displayed with the National Register listed properties dataset turned on and activated.



The other tool icons displayed on this bar are also available on the left side of the CHRIS map display along with a **Home** icon. These tools perform the following functions:

Home - Returns user to the CHRIS startup page. Select the CHRIS banner to return to the logon page.

Photographic Tour - Link to picture slide shows created by Division. Currently featured are a Tour of historic properties open to the public and owned by the Division, and National Register listed properties owned by the State of Delaware.

Useful Links - Links to websites featuring other GIS applications, historic maps, and information on historic preservation programs.

RSS Feed – Forum for comments and information approved by HCA on National Register properties.

Quick Picks on the Map - Move cursor over an icon in the application and view instructions on how to use these tools:



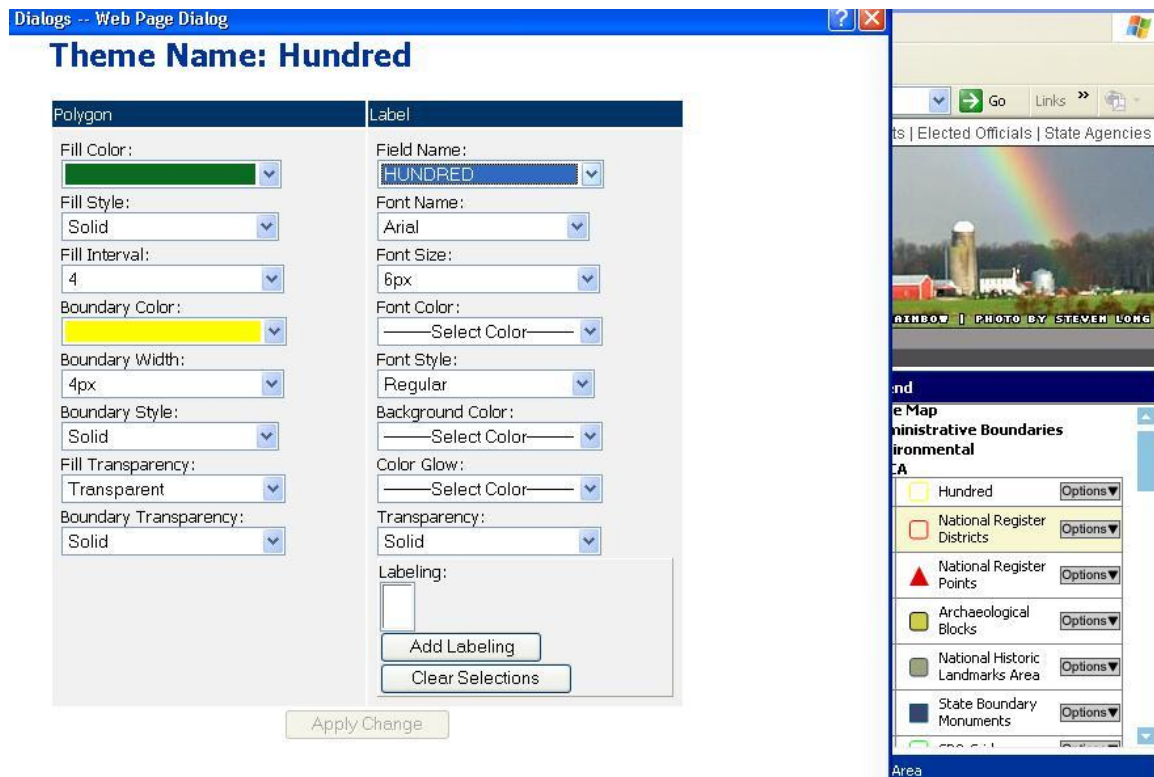
Location: Includes map coordinates in lat/long, xy (easting, northing) and UTM (The public version only displays coordinates in lat/long). There is also a drop down list of preset scales to change the map display.

The right side of the CHRIS display includes the Legend with Base Map, Administrative Boundaries, Environmental, DHCA and DeIDOT datasets that can be viewed in CHRIS. The imagery includes aeriels from 1937, 1954, 1961, 1992, 1997, 2002, and 2007. Also included are the georeferenced 1868 Beers Atlas, and the 1964 SPO maps (These two image sets are not included in the public version). To turn on a different dataset, select the first box beside the dataset. A check mark will appear in the box. Selecting the second box activates the dataset. Note: To identify features in a dataset, it must be the active layer.



Add Labels and change map symbols:

To add labels or make changes to a map symbol for a dataset, click on the symbol marker in the Legend area. (Example: Yellow polygon for the Hundred layer). A window will display with options for changing the marker color, style, and size. Labels can be added by choosing an attribute from the Field Name box, and then choosing the font color, style and size you want to display on the map. Click the **Add Labeling** box to accept the changes. Next, click on **Apply Changes** to return to the map view area. Labels and map symbol changes will be displayed. Note: Changes will not be saved to the CHRIS application. The default view will be restored the next time you use CHRIS.



Print National Register Images:

Double click the image thumbnail to open the image in the viewer. Right click the image and select **print picture** from the list of choices. A print window will display where you can choose the print options for your printer. To save the image to your computer, select **save picture as** from the list of choices when you right click on the image.

The application tool bar beside the Legend includes standard and custom GIS tools. Move the cursor over an icon to display the function.

Zoom to Full Extent – Returns the map display area to the default view of the entire State.

Zoom In - Select an area on the map by clicking and dragging a box around it to display a closer view area.

Zoom Out – Select an area on the map by clicking and dragging a box around it to display more of the map display area.

Pan – Allows you to move the map display area North, South, East and West.

Last Map – Returns view to the previous map extent.

Refresh - Re-draws the map area you are currently viewing.

Identify – Select a feature on the map to display the available data attributes.

Reporting Tool – Select a pre-loaded report generated from HCA datasets.

Measure – Select a beginning and ending point on the map to display the total length in feet or meters. Draw a polygon around an area to display the total area in acres, feet and meters.

Print – Select print options to create a map of a view area.

Drawing Tool – Select point, line or polygon to draw on a view area.

Clear Selection – Allows you to remove the point, line or polygon or all map features drawn using the Drawing Tool.

Text - Select text options and input desired text. Submit drawing request, and click on map location where you want text to display.

Search Tool - Select a table from a CHRIS dataset, and search by a single attribute, or perform an advanced search using logical operators to search for multiple attributes.

Query Tool – Click and drag a box around an area on the map display to view data and associated attributes located in that area.

User Submission Tool – Allows user to submit information and/or images about a National Register listed property. Select the point on the map that you have information about. The user submission form will display. Fill in the information requested, and save the submission.

Submission Review Tool – Allows CHRIS administrator to review a user submission request and approve it for publication or decline it based on validity checks.

Slider Buttons:

View Area – Zoom to an area on the map by selecting a preloaded view type. Select the View Area slider to display the view area types. Select municipalities, County, State Senate Districts or State House Districts. A drop down list will display with the choices you can make for the view area type. Once you have selected the view area you want to see, select **Load View** and the map will load with the area you selected.

Attributes – When you identify a National Register listed property the attributes for that point will display in this area.

Measure - Select a beginning and ending point on the map to display the total length in feet or meters. Draw a polygon around an area to display the total area in acres, feet and meters.

GPS Tools – Allows user to enter coordinate values (xy, lat/long, UTM) to locate an area on the map display. After entering the coordinate values, select the **Get Location** button and the map display will zoom to the area based on the data you entered. This tool is only available with full access to CHRIS.